



**CONDUCT OF MAJOR
EXAMINATIONS UNDER MODULAR
APPROACH IN THE NEW NORMAL**


Doc Control No.	PRMSU-ASA-COMSP011		
Effectivity Date	May 4, 2021		
Revision No.	00	Page 1 of 4	

Revision History			
Rev. No.	Originator	Details of Revision	
00	Lilian F. Uy	Original Issue	

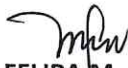
This document is updated and controlled if all pages bear the BLUE "CONTROLLED COPY" stamp. Otherwise, please refer to the Document Control Officer (DCO) for your updated copy.


CONTROLLED COPY
BY: BERRY DE GRAYA
DATE: MAY 04 2021

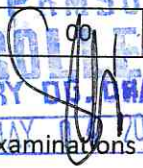
Prepared by:


LILIAN F. UY, EdD.
 Dean, College of Teacher Education

Reviewed and Approved by:


FELIPA M. RICO, PhD.
 VP, Academic & Student Affairs

	CONDUCT OF MAJOR EXAMINATIONS UNDER MODULAR APPROACH IN THE NEW NORMAL	Doc Control No. PRMSU-ASA-COMSP011	Page 2 of 4
		Effectivity Date May 4, 2021	
		Revision No. 00	


 BY: **GERRY D. QUAYA**
 MAY 10 2021

1.0 OBJECTIVE

To establish and maintain documented procedure in conducting the major examinations during the New Normal to those students under the Modular Approach

2.0 SCOPE

This procedure applies to all faculty members under part-time, Contract of Service, and Regular status.

3.0 REFERENCES

PRMSU Strategic Framework for Flexible Teaching/Learning System



4.0 DEFINITION OF TERMS

Modular Approach refers to the other alternative learning delivery modality which is stipulated in the PRMSU Strategic Framework for Flexible teaching and learning system.

PRMSU Strategic Framework for Flexible Teaching/Learning System refers to the approved and implemented flexible learning during the time of New Normal where no face to face holding of classes is not allowed.

Self-Learning Module (SLM) is a self-contained independent learning; it refers to the printed learning materials prepared by the instructors/professors

Major Examination refers to the Midterm examination and Final examination which comprises the 30% of the Term grade

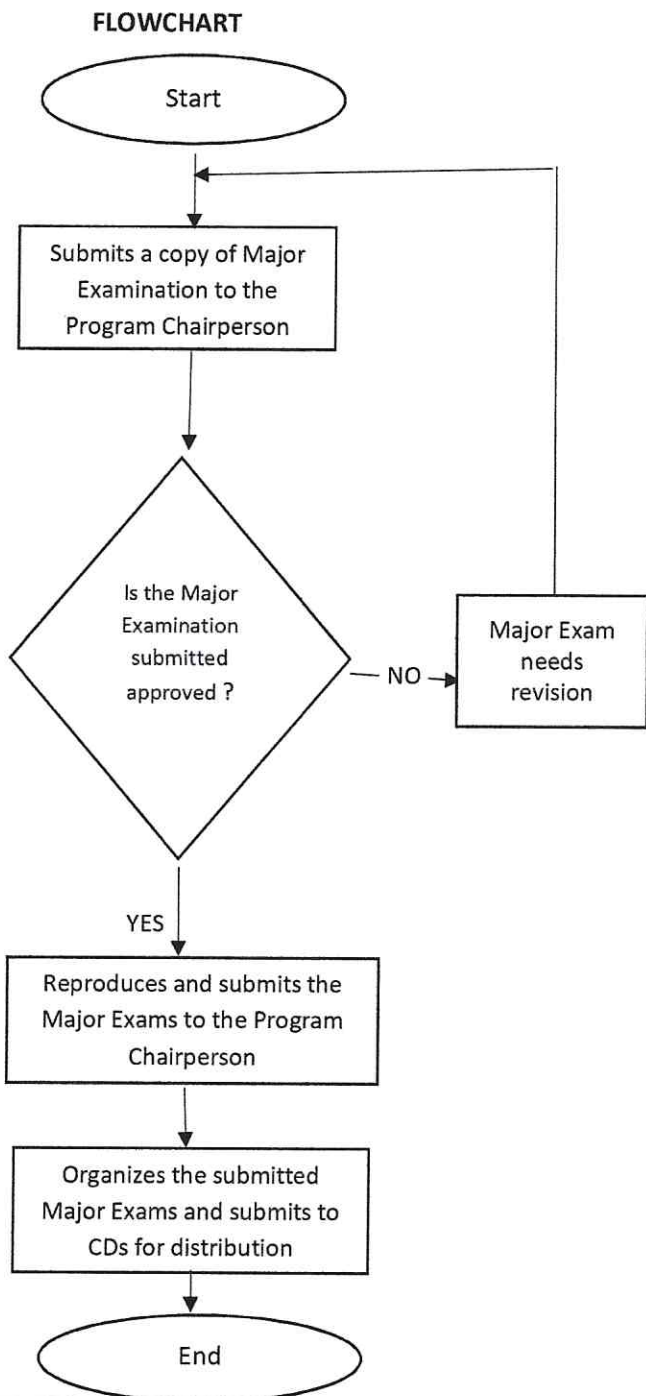
Prepared by:  LILIAN F. UY, EdD. Dean, College of Teacher Education	Reviewed and Approved by:  FELIPA M. RICO, PhD. VP, Academic & Student Affairs
--	---



CONDUCT OF MAJOR EXAMINATIONS UNDER MODULAR APPROACH IN THE NEW NORMAL

Doc Control No.	PRMSU-ASA-COMSP011	
Effectivity Date	May 4, 2021	
Revision No.	00	Page 3 of 4

5.0 PROCEDURES




RESponsible

CONTROLED COPY
 BY: GERRY D. ORAYA
 MAY 0 2021

- | | |
|--|--|
| Faculty member | 1. Prepares and submits a copy of the Major Examination |
| Program/Dept. Chairperson | 2. Program chairperson reviews the Major Examination submitted |
| Program/Dept. Chairperson | 3. If the Major Examination needs for revision, the program chairperson returns the Major Examination |
| Program/Dept Chairperson and deans | 4. If found no error, the program chairperson and dean sign the Major examination and returns the Major examination |
| Faculty member and Program Chairperson | 5. After reproducing, and labelling, faculty member submits the Major exams to the program chairperson |
| Program Chairperson | 6. The program chairperson organizes the submitted Major exams and submits to the Campus Directors for distribution to LGUs or to other campuses |



Prepared by: <div style="text-align: center;"> LILIAN F. UY, EdD. Dean, College of Teacher Education </div>	Reviewed and Approved by: <div style="text-align: center;"> FELIPA M. RICO, PhD. VP, Academic & Student Affairs </div>
--	---

	CONDUCT OF MAJOR EXAMINATIONS UNDER MODULAR APPROACH IN THE NEW NORMAL	Doc Control No.	PRMSU-ASA-COMSP011	
		Effectivity Date	May 4, 2021	
		Revision No.	00	Page 4 of 4

PRMSU
CONTROLLED COPY
 BY: GERRY DE URAYA
 DATE: MAY 04 2021

6.0 ATTACHMENT/FORMS

- PRMSU Strategic Framework for Flexible Teaching and Learning

Prepared by:  LILIAN F. UY, EdD. Dean, College of Teacher Education	Reviewed and Approved by:  FELIPA M. RICO, PhD. VP, Academic & Student Affairs
--	---